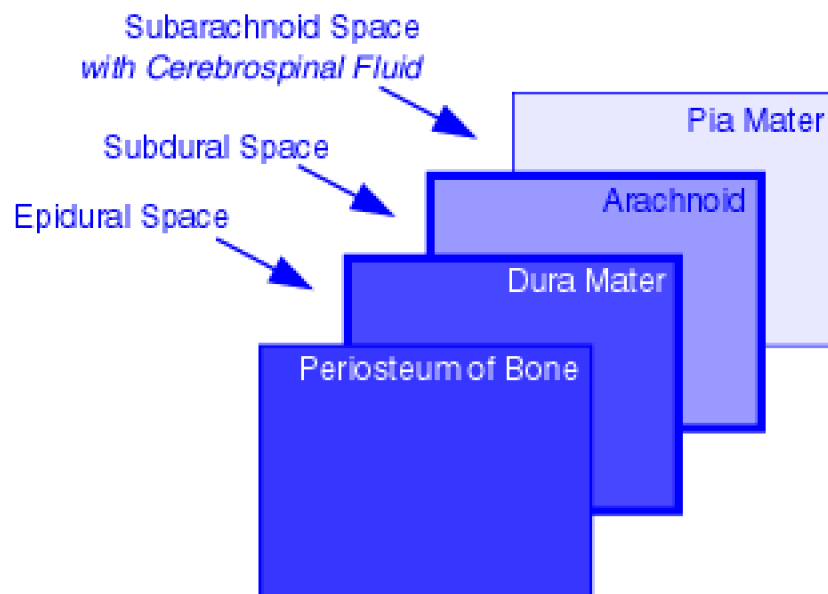


## Spinal Cord and Spinal Nerves

1. Spinal Cord
  - A. Medulla Oblongata
  - B. Conus Terminalis
    - Filum Terminale
    - Caudal Equina
  - C. Spinal Nerves
    - Intervertebral Foramen
  - D. Naming of Spinal Nerves
    - C1 – C8 (not 7); T1 – T12, etc
  - E. Enlargments
    - i. Cervical Enlargement
    - ii. Lumbosacral (Lumbar) Enlargement
2. Spinal Meninges



- A. Dura Mater
    - i. Epidural Space
  - B. Arachnoid
    - i. Subdural Space
  - C. Pia Mater
    - i. Subarachnoid Space cerebrospinal fluid
      - \* Cerebrospinal Fluid
3. Cerebrospinal Fluid Production and Flow
- A. Ventricles of Brain
    - i. Two Lateral Ventricles
    - ii. Third Ventricle
      - \* Cerebral Aqueduct
    - iii. Forth Ventricle
  - B. Choroid Plexus
  - C. Two Lateral and One Median Aperture
  - D. Subarachnoid Space
  - E. Arachnoid Villi (also called granulations)
  - F. Superior Sagittal Sinus

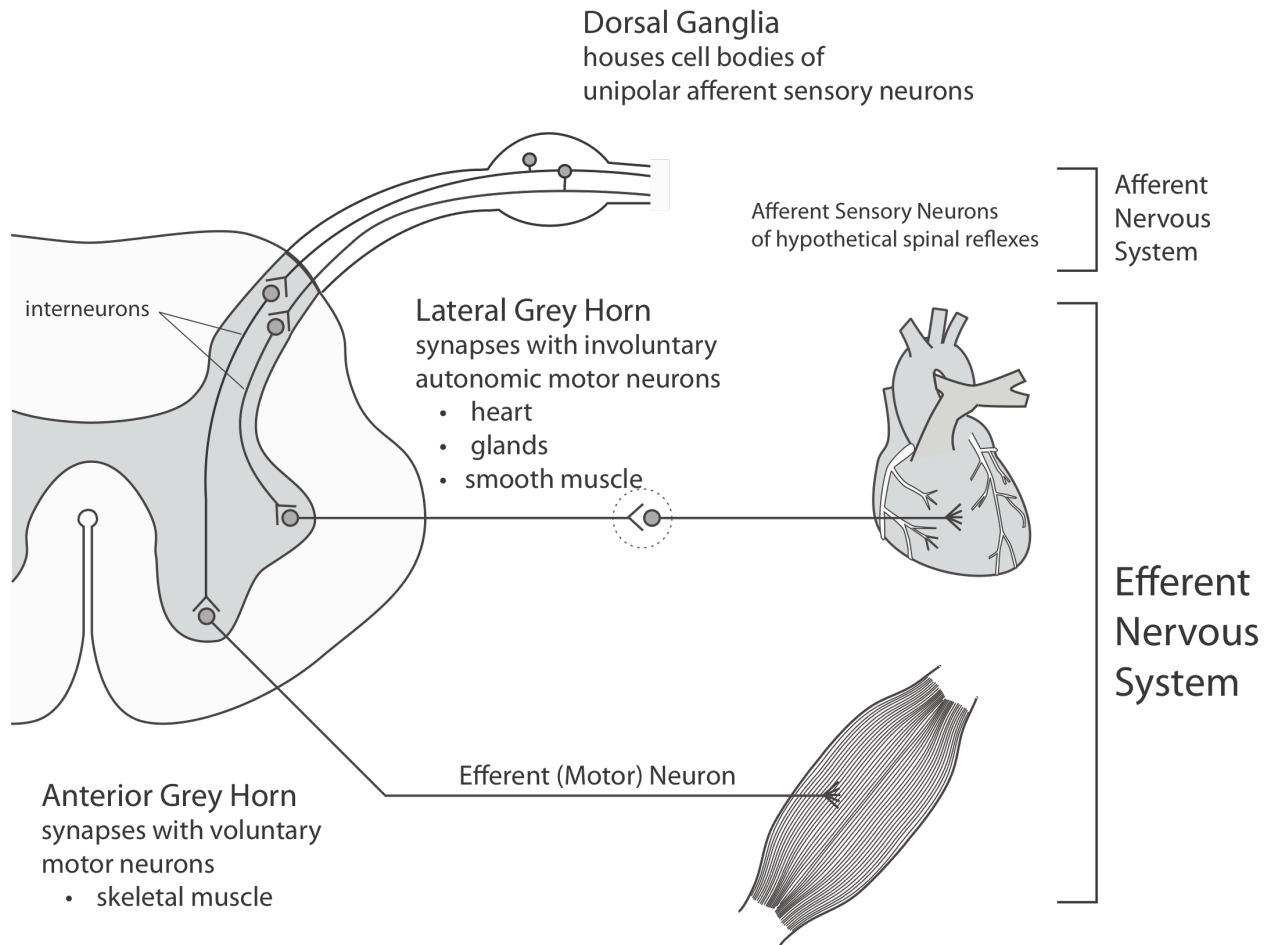
4. Overview of Internal Structure

- A. Central Canal
- B. Anterior Median Fissure
- C. Posterior Median Sulcus
- D. Gray Matter
- E. White Matter
- F. Ventral and Dorsal Roots
  - i. Dorsal Root Ganglion

5. Gray Matter

Gray Commissure  
• Central Canal

- A. Posterior (Dorsal) Horns
  
- B. Anterior (Ventral) Horns
  
- C. Lateral Horns
  
- D. Dorsal Roots
  - i. Dorsal Root Ganglion
  
- E. Ventral Roots



## 6. White Matter

### A. White Columns or Funiculi

- i. Posterior
- ii. Lateral
- iii. Anterior Funiculi

### B. Fasciculi (Tracts)

- i. Ascending Tracts
- ii. Descending Tracts

### C. Naming of Tracks

## 7. Major Functions of Spinal Cord

### A. Impulse Transmission

B. Reflex Center

- i. Posterior (sensory) Root
- ii. Anterior (motor) Root

C. Reflex Integration

9. Reflex Arc

- Conduction Path

A. Receptor

- Thermoreceptors
- Baroreceptors
- Light receptors
- Stretch receptors
- Chemoreceptors
- Osmoreceptors
- ETC

B. Afferent / Sensory Neuron

- Unipolar

C. Interneurons

- Multipolar
- i. Excitatory Interneurons → EPSP
  - ii. Inhibitory Interneurons → IPSP

D. Efferent / Motor Neuron

- Multipolar

E. Effector

i. Muscle

ii. Gland

Reflex Classifications

A. Spinal Reflexes

B. Somatic Reflexes

C. Cranial Reflexes

D. Visceral Reflexes

10. Specific Reflexes (*Pull out your HANDOUT on Reflexes*)

A. General Reflex Arc

B. Stretch Reflex

i. Patellar Reflex

C. Tendon Reflex

D. Flexor Reflex and Crossed Extensor Reflex

12. Dermatomes